

Having trouble viewing this email? [Click here](#)



Arts Council of Greater Lansing

Leading, advocating for, and advancing arts and culture in the capital region since 1965

June 2011



5th Annual Taste of Art and Life A Success

Period Reproduction Home Draws Record Attendance

More than 250 people attended the Arts Council's fifth annual spring fundraiser on May 17th held at Lyn and Karen Beekman's beautiful residence, a period reproduction of a mid-1700's Connecticut Georgian, designed and built by the Beekman family.

Along with tours of the home, attendees enjoyed a silent auction, appetizers and desserts, a wine tasting, a beer tasting provided by [Michigan Brewing Company - Downtown Lansing](#), and live entertainment provided by award-winning musicians [Wanda Degen](#) and [Neil Woodward](#), signature appetizers and desserts provided by [Dusty's Cellar](#), [Harrison Roadhouse](#), [Michigan Brewing Company - Downtown Lansing](#), [Mitchell's Fish Market](#), and [Spartan Signature Catering](#). An artist showcase with live demonstrations and artwork from local artists included Michele Frederick, Marie Gile, Faina Letoutchaia, [Vaughn and Stephanie Rawson](#), [Jane Reiter](#), Pat Richey, Rhonda Swayze, [Douglas Thayer](#), Angela Tzoumakas, and Jim Wolnowsky.



The Beekman Home

"We would like to thank our sponsors, patrons and attendees for their generosity and support of the Arts Council," said Executive Director Leslie Donaldson. "A special thank you also to Lyn & Karen for sharing their wonderful home in support of the arts."



A TASTE OF
Art & Life
THE ARTS COUNCIL
OF GREATER LANSING

Thank You Sponsors

ASAP Printing	Harrison Roadhouse
Biggy Coffee	Merrill Lynch / Kevin and
Capitol National Bank	Lauri Draggoo
Capital Region Community Fdn.	Lake Trust Credit Union
CATA	Parish Companies
Coldwell Banker Hubbell Briarwood	MBC, Downtown Lansing
Cooley Law School	Mitchell's Fish Market
Dart Bank	Rehmann
Dean Transportation, Inc.	Tech Smith
Dusty's Cellar	Warmels & Comstock, PLLC
Estes-Leadley Funeral Homes	Wharton Center for Performing Arts
Friedland Industries, Inc.	Woven Art
Foster Swift Collins & Smith, P.C.	Zahrah R Gallery, Contemporary Art

Thank you sponsors, patrons, and attendees for supporting the work of the Arts Council and the arts in the capital region.

Artist Spotlight: Kate Cosgrove & Melissa Dey Hasbrook

**Arts Council Individual Artist Grant Recipients
Premiere Work June 4**

A recipient of a 2011 Individual Artist Grant from the Arts Council of Greater Lansing, Lansing-based illustrator and fine artist, [Kate Cosgrove](#), brings her *Animal ArtVenture* exhibit to the Lansing Art Gallery. Contrasting miniature illustrations with large-scale reproductions, Cosgrove considers it a "serious mission to spread some joy" through the work she creates.



Artwork by Kate Cosgrove

Cosgrove's whimsical imagery explores the imagination and intends to "pay forward" the inspiration she received as a young artist.

In addition to her exhibit, which runs through June 23, Cosgrove will provide an interactive mural experience for children and families from 10am to 5pm at the [Lansing Art Gallery](#) during the [Be A Tourist in Your Own Town](#) event on June 4th.

Also through the support of a 2011 Individual Artist Grant from the Arts Council, [Melissa Dey](#)

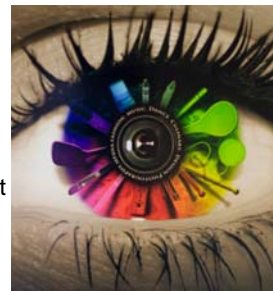


June Artist Opportunities

Employment, Funding, and Opportunities for Professionals Working in the Arts

[June Opportunities](#)

Summer is officially here, and there are countless ways to flex your artistic muscle. Summer Art Studios abound at the [Lansing Art Gallery](#), the Andy Warhol Foundation



is now taking applications for their [Leadership Institute for Visual Arts](#), and you can get connected to entrepreneurship in Greater Lansing during a two-day meeting of the minds at [Entrepreneur Connect 2011](#).

Also, don't miss all the latest information for artists and arts organizations on our [opportunities](#) page. The page includes listings for upcoming grant deadlines, auditions, exhibition opportunities, and other information of interest to the arts community. Hurry, though, as they'll be gone in a blink!

[Hasbrook](#) will present *Stories about Turtle Island* through poetry, storytelling, and song. The event, which takes place at 1pm on June 4 at [Everybody Reads Bookstore](#), 2019 E. Michigan Ave., celebrates stories about North America -- also known as Turtle Island -- and pays tribute to the land and the ancestors who have inspired Hasbrook's forthcoming book *Circle . . . Home*. Illustrator Linda Robinson and musician-biologist Barb Barton will also participate during this special event. For more information about the event or Hasbrook's work, please visit [deyofthephoenix.com](#), or email melissahasbrook@gmail.com, or phone (517) 897-5833.



MCACA Seeking Field Trip Data Online Database Needs Input to Provide Listing of Arts Opportunities for K-12 Schools

The [Michigan Council for Arts and Cultural Affairs](#) is creating an online database of K-12 field trip opportunities offered by arts and culture organizations. If your organization would like to be included in the database so K-12 schools can quickly and easily find your organization's programs and contact information, [click here](#) to download the Field Trip Questionnaire.

The database will be accessible on the Michigan Council for Arts and Cultural Affairs website and will be marketed to schools in the fall. Please respond by June 22nd.

If you have any questions, or when you've finished the questionnaire, email Luke Bunge at bungel@michigan.org, or fax to (517) 241-3979.

June Arts and Cultural Calendar *Your Link to Exhibitions, Events, Festivals, and the Performing Arts in Greater Lansing*

[June Calendar](#)

The month of June is ready to fulfill all tastes with local concerts, performances, festivals and exhibits.



[Lansing First Fridays](#) kicks off the summer season with arts, food and drink specials, fun activities and free [CATA service](#) to connect you to experiences around town on June 3.



The [4th Annual Riverbash](#) kicks off a busy month of festivals in Greater Lansing on June 3, while the 17th annual [Be A Tourist in Your Own Town](#) celebrates Greater Lansing on June 4,

[World Day at Hunter Park](#) features diverse cultural performances on June 11, the [Summer Solstice Jazz Festival](#) visits downtown East Lansing June 17-18, and the [Festival of the Moon & Sun](#), and the third annual [Scrapfest](#) return to Old Town Lansing June 24-25.

For the theatre lover, [MSU Summer Circle Theatre](#) heads down to the banks of the Red Cedar for three different plays over three weeks beginning June 8, and the [LCC Summer Stage Under the Stars](#) kicks off its season June 15, all for free. And Suellen Hozman unveils her *Flesh Tones* Art Exhibition at [Absolute Gallery](#), featuring silver gelatin photographic prints and personal stories that celebrate flesh colors and flesh decorations.

ArtSmarts Among Innovators *MSU Center Releases Key Report on Lifelong Arts Engagement*

The Michigan State University Center for Community and Economic Development's Cultural Economy Research



Team recently published a report on the correlation between sustained arts and crafts participation and the success of university graduates working in STEM (science, technology, engineering and mathematics) fields as measured by patents and start-up companies. The report contains extremely relevant insights into the need for investment in arts and crafts due to their utility in supporting innovation by workers in STEM fields. These findings suggest that participation throughout an individual's life in art, music, dance, and crafts is a useful, valuable, and essential component of the economic recovery of Michigan and the nation. To read or download the report, please [click here](#).

Summer Solstice Jazz Festival Heats Up Downtown East Lansing June 17-18

The 15th annual Summer Solstice Jazz Festival will make its way to Downtown East Lansing June 17-18 featuring a bevy of local and national jazz performers. This extraordinary two-day jazz festival features FREE performances from 4:30-10:30 p.m. both days in Parking Lot 1, located on the corner of Albert Ave. and Abbot Rd. in downtown East Lansing. The festival is co-produced by the [City of East Lansing](#), [Wharton Center for Performing Arts](#) and the [MSU College of Music](#). This year's line-up includes:



Main Stage Performances - Downtown East Lansing

Friday, June 17 - FREE

4:30 p.m. Metro Jazz Voices
 6 p.m. Etienne Charles & Folklore
 7:30 p.m. Grace Kelly Quintet
 9:15 p.m. Tumbao Bravo
 Afterglow Arlene McDaniel Quintet (at Mumbai)

Saturday, June 18 - FREE

4:30 p.m. Randy Gelispie & Friends
 6 p.m. Billie Holiday Project featuring Mardra Thomas
 7:30 p.m. Taylor Eigsti Quartet
 9:15 p.m. Grupo-Aye'
 Afterglow Rodney Whitaker Quartet (at Mumbai)

In addition to the main stage acts, the Jonathan Beshay Quartet and the Tamara Mayers Jazz Combo will be the interlude performers on Friday and Saturday evening respectively. Visit www.eljazzfest.com for more information.



Michigan Nonprofit Association

Michigan Tax Reform Update

Bill Eliminates Charitable Tax Credit

Tax reform legislation was passed by both the

Michigan Senate and House on May 12th, and was signed by Governor Rick Snyder on May 25th, eliminating the charitable tax credit, replacing the Michigan Business Tax with a 6 percent corporate income tax, and taxes pensions. The elimination of the charitable tax credits will impact Michigan's nonprofit sector and charitable giving.

Also at risk of elimination are Federal Charitable Deductions. With the increased focus on deficit reduction in Washington, emerging threats to the charitable deduction are becoming more pronounced. Independent Sector has created a one-pager that provides more information on the importance of these deductions. Visit www.independentsector.org for more information.

In more positive news, included in the same tax legislation, Michigan's Earned Income Tax Credit will not be eliminated. Instead, filers will receive a 6 percent match of the federal EITC, rather than the 20 percent match as the credit stands now. While this is a reduction, this legislation preserves the spirit of the EITC. The original legislation zeroed out the credit, later to be changed to a \$25 per child tax credit. The 6 percent state EITC will still help low-income families.

The [Michigan Nonprofit Association](http://www.mnaonline.org) sent letters to legislators in support of retaining the charitable tax credits. The sign-on letter can be viewed [here](#). MNA will continue to work with the legislature to introduce an amendment to this legislation and the Arts Council will provide updates as they are received.

Update courtesy of Michigan Nonprofit Association. Please visit www.mnaonline.org for more information or call 517-492-2400.



Festival Alliance Unveils New Website

Greater Lansing is teeming with festivals (12 in June alone)! And now there's an easier way to keep up to date on the latest, most innovative, and exciting festivals in Mid-Michigan. [Click here](#) to check out the new GLFA website and find out just what makes Lansing the festive leader for arts & culture in our state!

Copyright © 2011 Arts Council of Greater Lansing, Inc. All rights reserved.

1208 Turner Street | Lansing, MI 48906 | Phone: 517.372.4636 | Fax: 517.484.2564

The Arts Council is supported in part by grants from the National Endowment for the Arts, Michigan Council for Arts and Cultural Affairs, Ingham County Hotel/Motel Tax Fund and the City of Lansing.



[Forward email](#)



Try it FREE today.

This email was sent to info@lansingarts.org by info@lansingarts.org | [Update Profile/Email Address](#) | Instant removal with [SafeUnsubscribe™](#) | [Privacy Policy](#).

Arts Council of Greater Lansing | 425 S. Grand Avenue | Lansing | MI | 48933